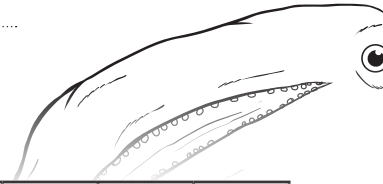


JONAH, NINEVEH AND THE BIG FISH



Discover the hidden words.



D	S	V	S	G	M	D	E	Z	X	Y	P	Z	H	C
A	R	T	Y	X	C	N	U	N	R	L	K	E	N	Q
X	L	A	O	O	B	A	H	C	X	L	J	M	I	R
F	P	O	O	R	M	L	S	E	P	E	C	E	S	K
M	Z	N	X	B	M	S	A	M	V	B	R	R	H	K
F	I	S	H	U	R	I	L	D	H	E	Q	C	I	Y
W	U	M	S	Z	M	E	K	Z	B	U	N	Y	P	Z
T	K	X	Q	G	S	Q	V	G	O	P	B	I	Z	O
Q	X	P	N	M	N	R	O	O	U	O	S	W	N	T
Z	R	Q	X	Z	Q	D	W	W	G	T	A	J	E	N
F	O	R	G	I	V	E	N	E	S	S	O	H	C	E
E	R	J	G	T	Y	R	H	X	U	N	M	A	Q	P
F	Q	H	O	K	M	W	U	B	A	R	G	C	Z	E
O	Z	G	Y	Q	Y	R	S	H	L	J	I	L	K	R
J	X	D	F	M	E	Q	G	B	P	N	N	T	G	O

Word Bank

FISH

JONAH

MERCY

OVERBOARD

SHIP

ISLAND

NINEVEH

FORGIVENESS

REPENT

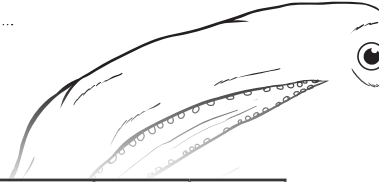
STORM

BELLY

GOD



JONAH, NINEVEH AND THE BIG FISH



ANSWER KEY

D	S	V	S	G	M	D	E	Z	X	Y	P	Z	H	C
A	R	T	Y	X	C	N	U	N	R	L	K	E	N	Q
X	L	A	O	O	B	A	H	C	X	L	J	M	I	R
F	P	O	O	R	M	L	S	E	P	E	C	E	S	K
M	Z	N	X	B	M	S	A	M	V	B	R	R	H	K
F	I	S	H	U	R	I	L	D	H	E	O	C	I	Y
W	U	M	S	Z	M	E	K	Z	B	U	N	Y	P	Z
T	K	X	Q	G	S	Q	V	G	O	P	B	I	Z	O
Q	X	P	N	M	N	R	O	O	U	O	S	W	N	T
Z	R	Q	X	Z	Q	O	W	W	G	T	A	J	E	N
F	O	R	G	I	V	E	N	E	S	S	O	H	C	E
E	R	J	G	T	Y	R	H	X	U	N	M	A	Q	P
F	Q	H	O	K	M	W	U	B	A	R	G	C	Z	E
O	Z	G	Y	Q	Y	R	S	H	L	J	I	L	K	R
J	X	D	F	M	E	Q	G	B	P	N	N	T	G	O

Word Bank

- | | | |
|-----------|-------------|--------|
| FISH | SHIP | REPENT |
| JONAH | ISLAND | STORM |
| MERCY | NINEVEH | BELLY |
| OVERBOARD | FORGIVENESS | GOD |

